



CNC Engraving Signage



Index

Series	Page No.
1) Stone Series	04
2) Wooden Series	09
3) Muddy Series	16
4) Gritty Series	19
5) Marble Series	28

Be Indian Buy Indian

“DECONYX” an **Indian**, First manufacturing unit to produce alabaster. Its **world’s first** unit to manufacture exterior and interior grade alabaster.

The best Characteristics of alabaster is that it can transmit light and has various styles and designs. It looks like natural stone and is easy to operate. It has advantage of being bent and has seamless joint property too. “Deconyx” is the only company in the world to produce exterior grade alabaster. Colourful architectural surface in matt finish is always the like of architects and we give our best to fulfil their needs. The elegance, design and quality really express the beauty of “Deconyx” material. Our upgraded technology and techniques offer visually perfect and easy in installation material for exterior and interior surface beautification. Transportation problem has no place in “Deconyx”.

“Deconyx” has a dream to provide unique and monopoly products. A lot of new products are in pipeline. Quality and service are both hands of “Deconyx”.

Unique Products Coming soon

- ❖ Natural Stone Sinks
- ❖ Natural stone Mirrors
- ❖ Natural Stone Vanity Counters
- ❖ Bathtub
- ❖ Bathroom Accessories

Covering new Environments, with last Generation Materials beyond our Dreams.

Applications:

- Hotel
- Resort
- Restaurant
- Bar
- Cafeteria
- Club house
- Banquet hall
- Mall
- Multiplex
- Showroom
- Corporate office
- Spa
- Beauty salon
- Gazebo
- Elevator
- Residence

Features

- Backlit Application
- Aesthetic
- Natural Look
- Highly Chemical Resistant
- Available in many Designs
- Approx Size 8'x4'
- A Versatile, Robust & Hygienic Surface.
- High Resistance to External Stress (abrasion, Impacts, Stains etc.)
- Non Porous, Waterproof Surface.



Crack Resistant



Moisture Resistant



Abrasion Resistant



Chemical Resistant



Heat Resistant



Impact Resistant

STONE SERIES



Without Light



With Light

SS-101

Size:
4'x8' (1220mm x 2440mm)
(+/- 5mm)

Thikness:
►4mm◄

- Natural Feel
- Stone Cladding
- Matt Finish
- Rustic Surface

Fireplace





Without Light



With Light

SS-102

Size:
4'x8' (1220mm x 2440mm)
(+/- 5mm)

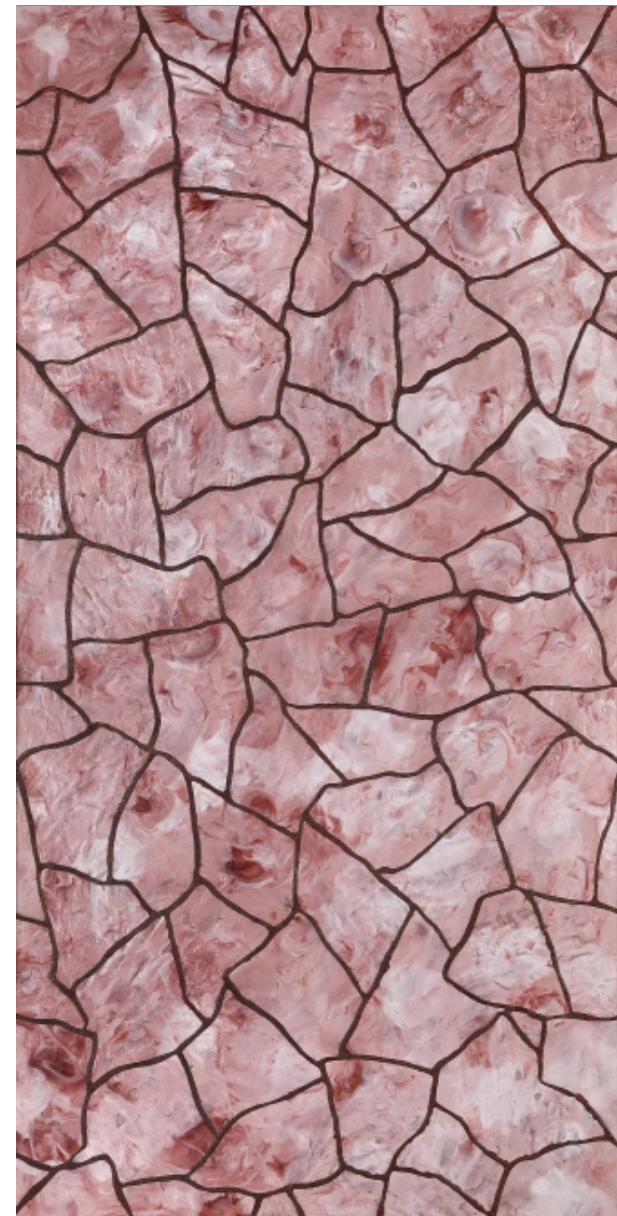
Thikness:
►4mm◄

- Natural Feel
- Stone Cladding
- Matt Finish
- Rustic Surface

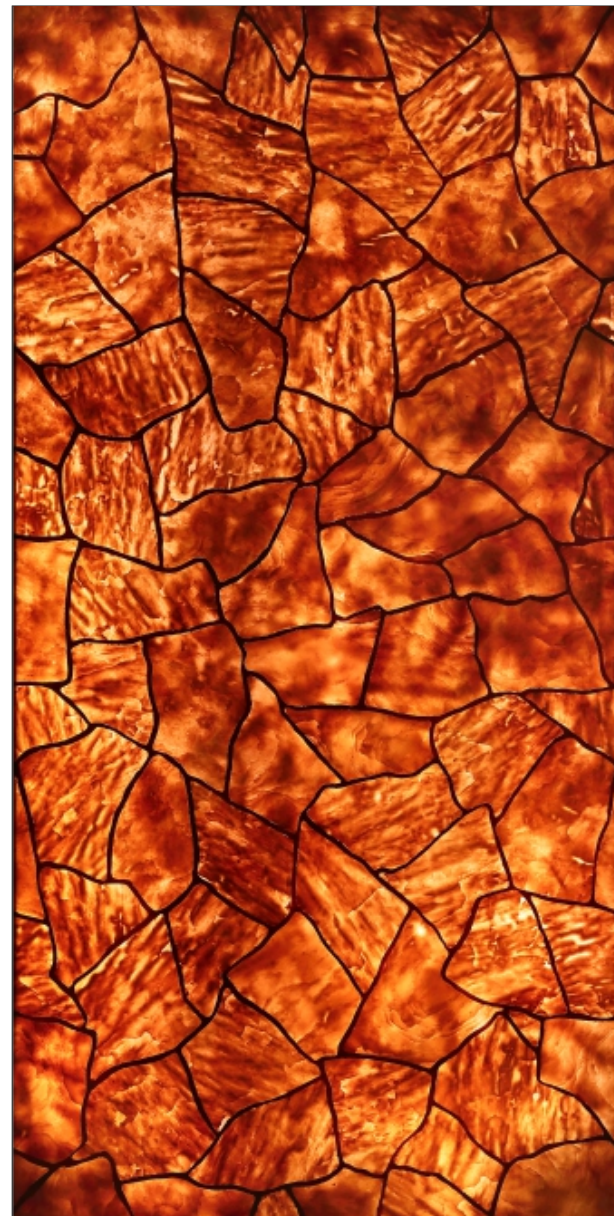


Building Exterior





Without Light



With Light

SS-103

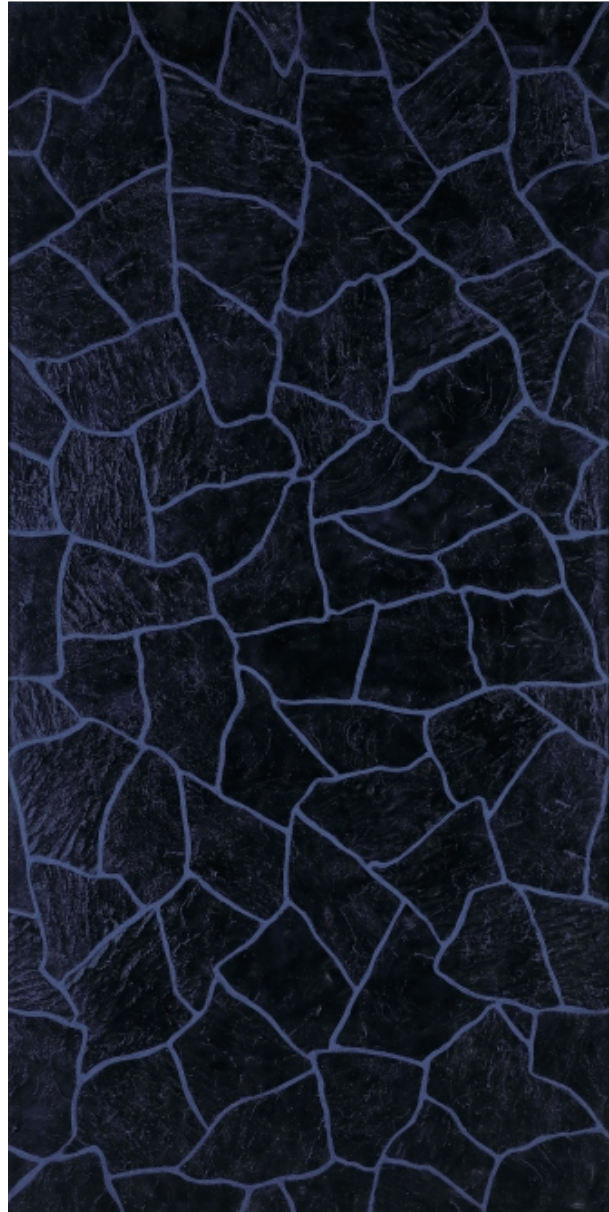
Size:
4'x8' (1220mm x 2440mm)
(+/- 5mm)

Thikness:
►4mm◄

- Natural Feel
- Stone Cladding
- Matt Finish
- Rustic Surface

Restaurant





Without Light



With Light

SS-104

Size:
4'x8' (1220mm x 2440mm)
(+/- 5mm)

Thikness:
►4mm◄

- Natural Feel
- Stone Cladding
- Matt Finish
- Rustic Surface

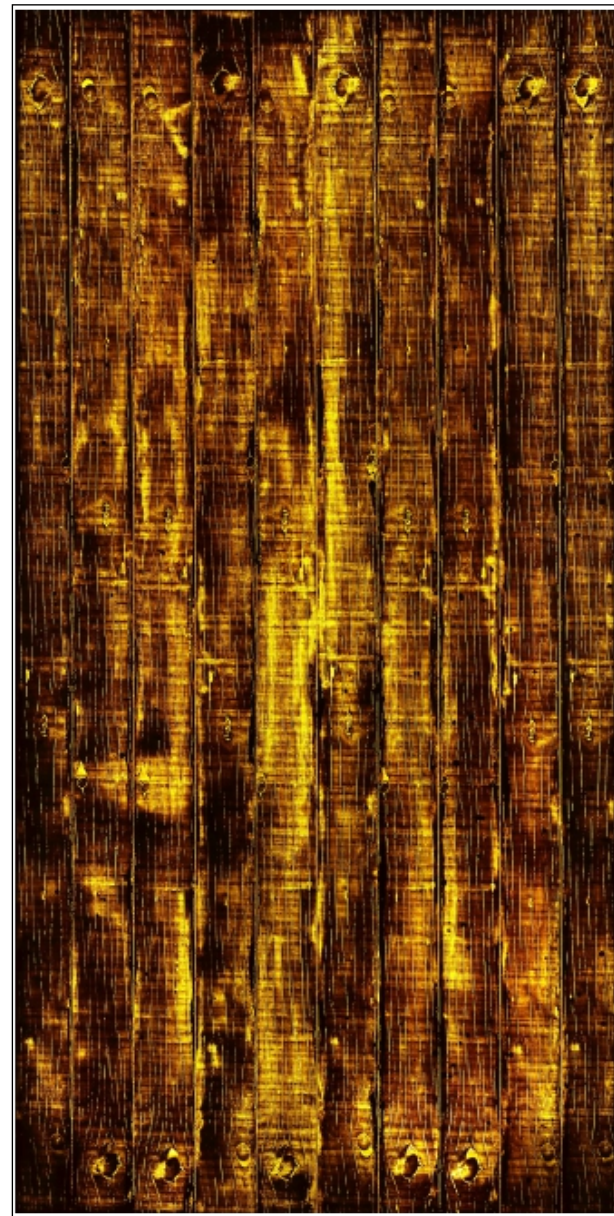


WOODEN SERIES

Living Room



Without Light



With Light

WS-101

Size:
4'x8' (1220mm x 2440mm)
(+/- 5mm)

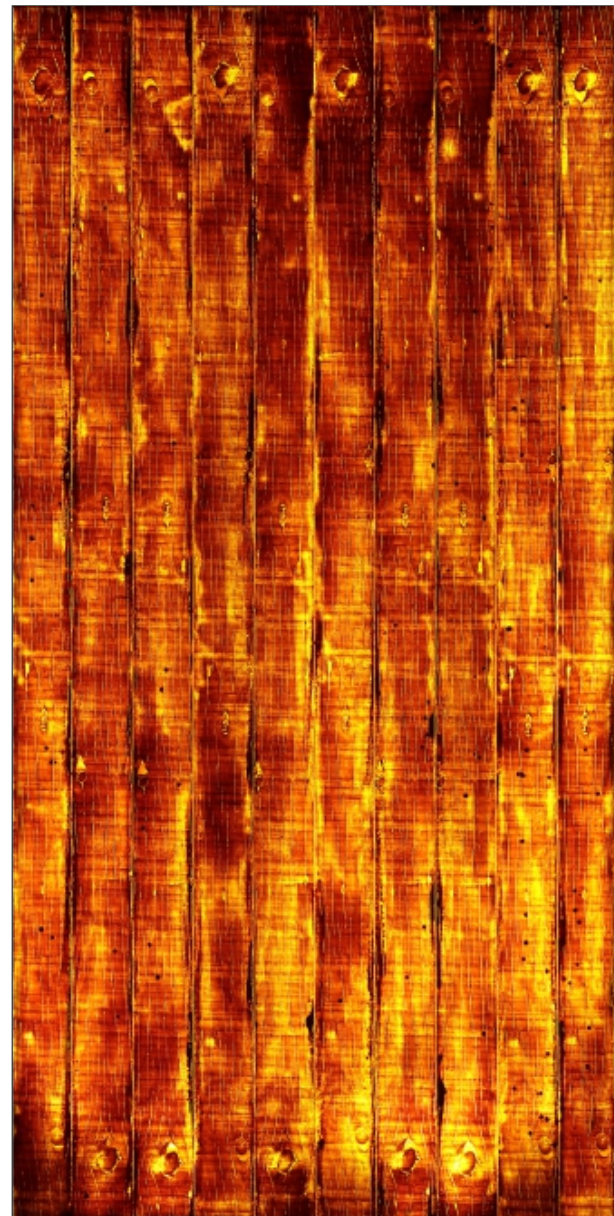
Thikness:
►4mm◄

- Natural Feel
- Wooden Plank
- Matt Finish
- Rustic Surface





Without Light



With Light

WS-102

- Natural Feel
- Matt Finish
- Wooden Plank
- Rustic Surface

Size:
4'x8' (1220mm x 2440mm)
(+/- 5mm)

Thickness:
►4mm◄



Gazzebo



- Natural Feel
- Wooden Plank
- Matt Finish
- Rustic Surface

DECONYX™
TRANSLUCENT SHINE PANELS



Without Light



With Light

WS-103

Size:
4'x8' (1220mm x 2440mm)
(+/- 5mm)

Thickness:
►4mm◄



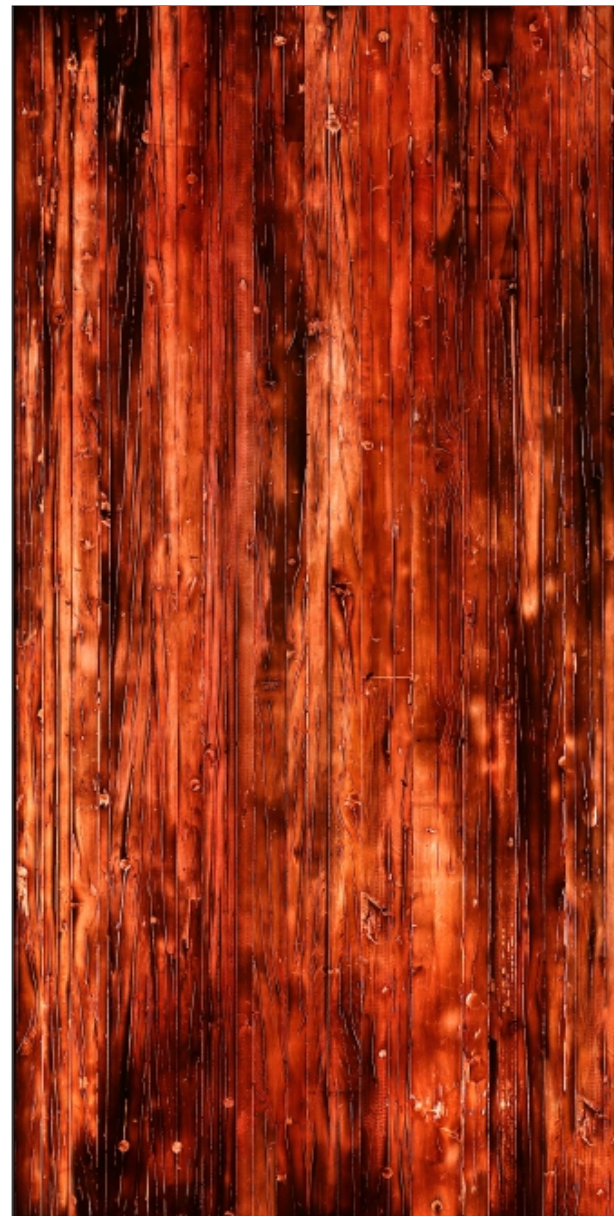
Office



DECONYX™
TRANSLUCENT SHINE PANELS



Without Light



With Light

WS-104

Size:
4'x8' (1220mm x 2440mm)
(+/- 5mm)

Thikness:
►4mm◄

- Natural Feel
- Wooden Plank
- Matt Finish
- Rustic Surface



STRAIRCASE



Drawing Room



Without Light



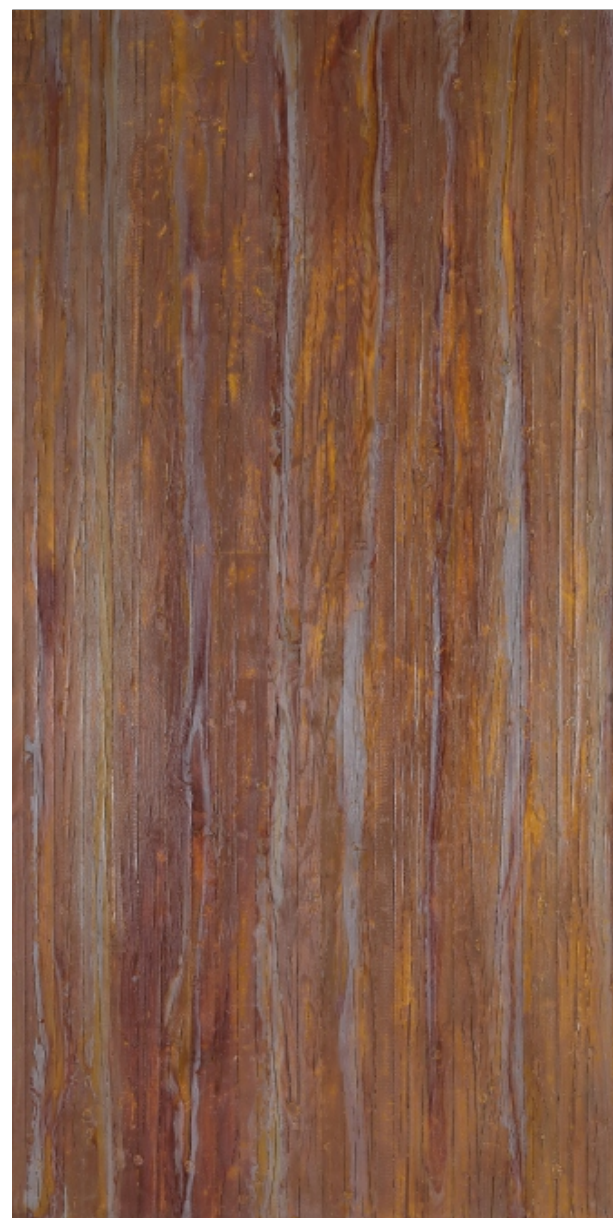
With Light

WS-105

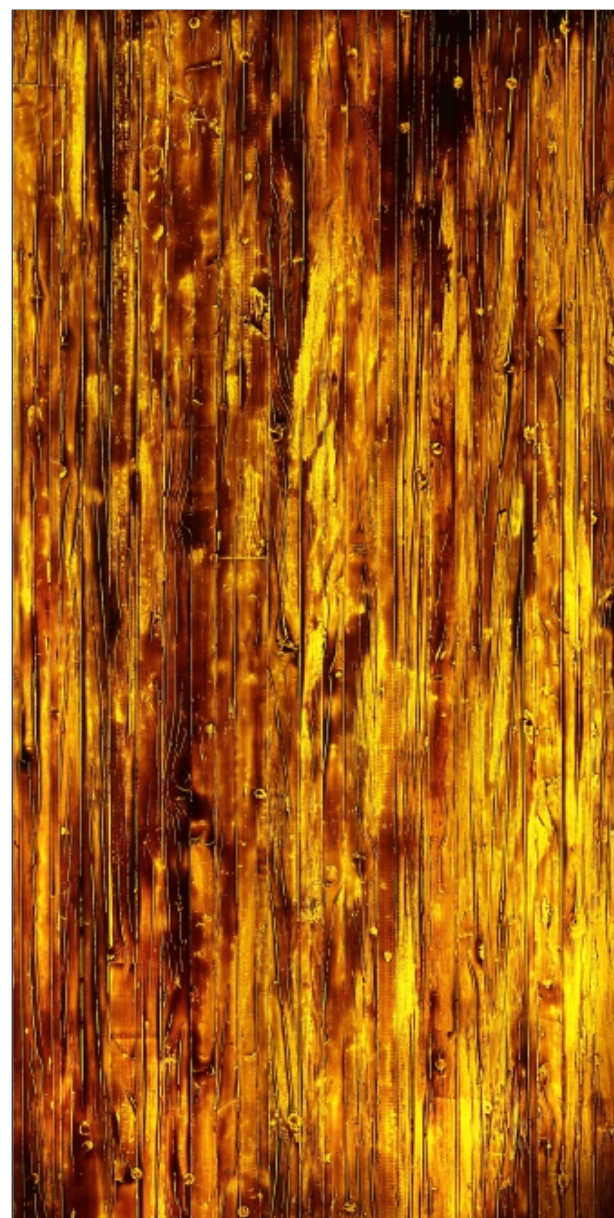
Size:
4'x8' (1220mm x 2440mm)
(+/- 5mm)

Thikness:
►4mm◄

- Natural Feel
- Wooden Plank
- Matt Finish
- Rustic Surface



Without Light



With Light

WS-106

Size:
4'x8' (1220mm x 2440mm)
(+/- 5mm)

Thikness:
►4mm◄

- Natural Feel
- Wooden Plank
- Matt Finish
- Rustic Surface



Fireplace

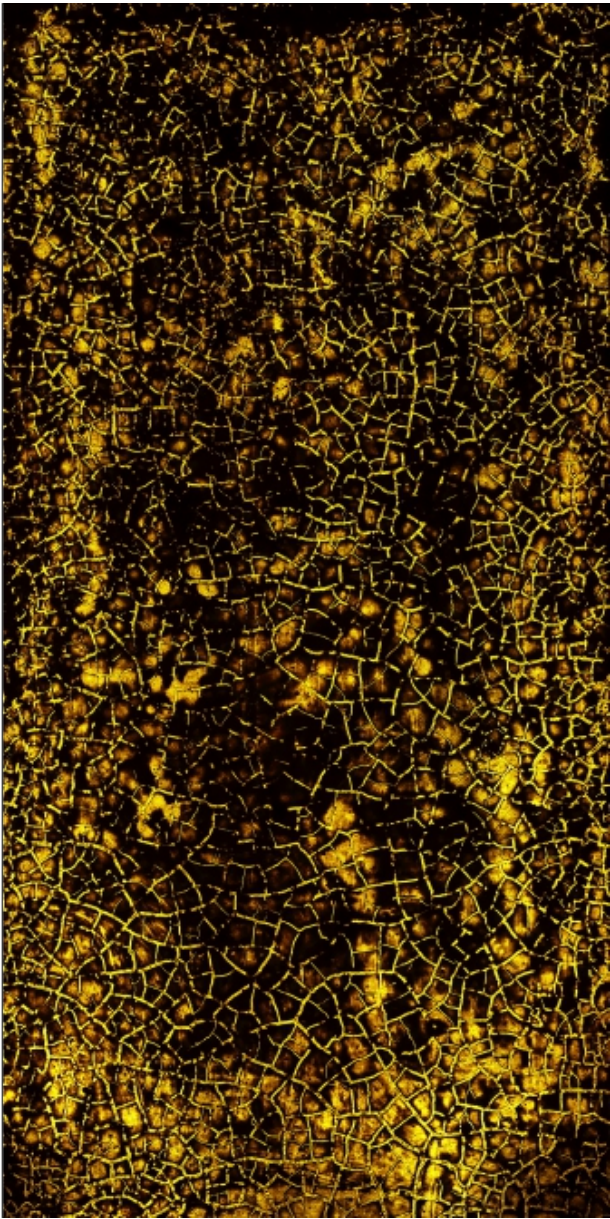


MUDDY SERIES

- Natural Feel
- Mud crack
- Matt Finish
- Rustic Surface



Without Light



With Light

MU-101

Size:
4'x8' (1220mm x 2440mm)
(+/- 5mm)

Thikness:
►4mm◄

CNC ENGRAVING for
Backlit Signage



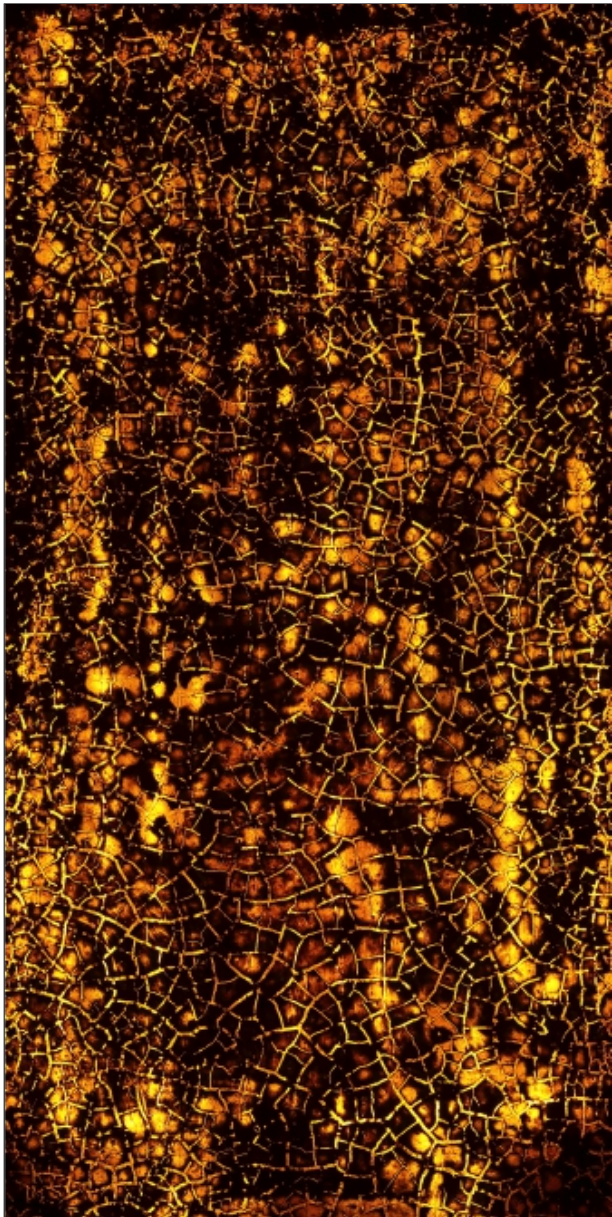
Showroom
Display Area



- Natural Feel
- Mud crack
- Matt Finish
- Rustic Surface



Without Light



With Light

MU-102

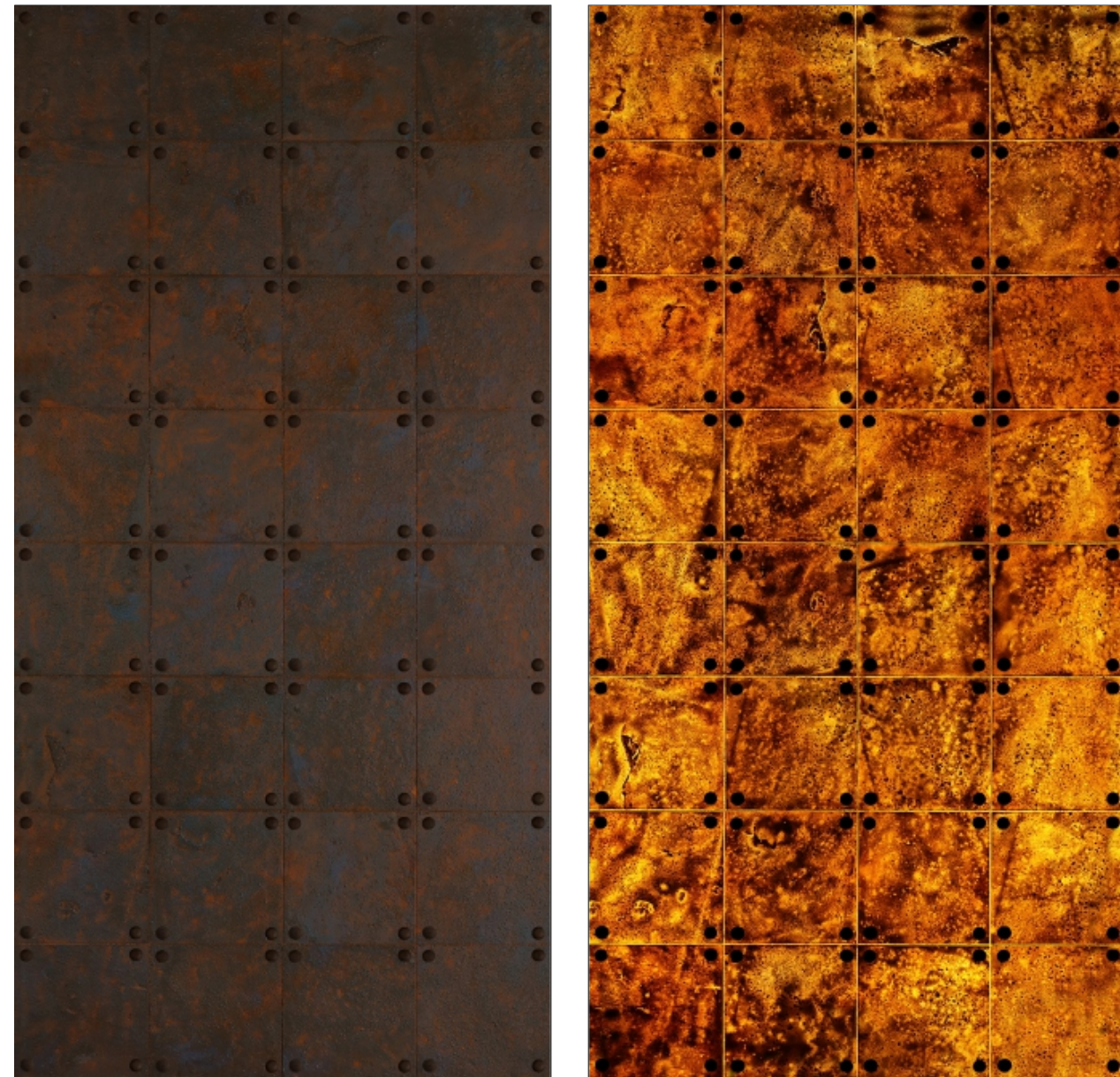
Size:
4'x8' (1220mm x 2440mm)
(+/- 5mm)

Thikness:
► 4mm ◄

Backlit Signage Background



GRITTY SERIES



Without Light

GS-101

With Light

Size:
4'x8' (1220mm x 2440mm)
(+/- 5mm)

Thikness:
►4mm◄

- Natural Feel
- Granite Stone
- Matt Finish
- Rustic Surface



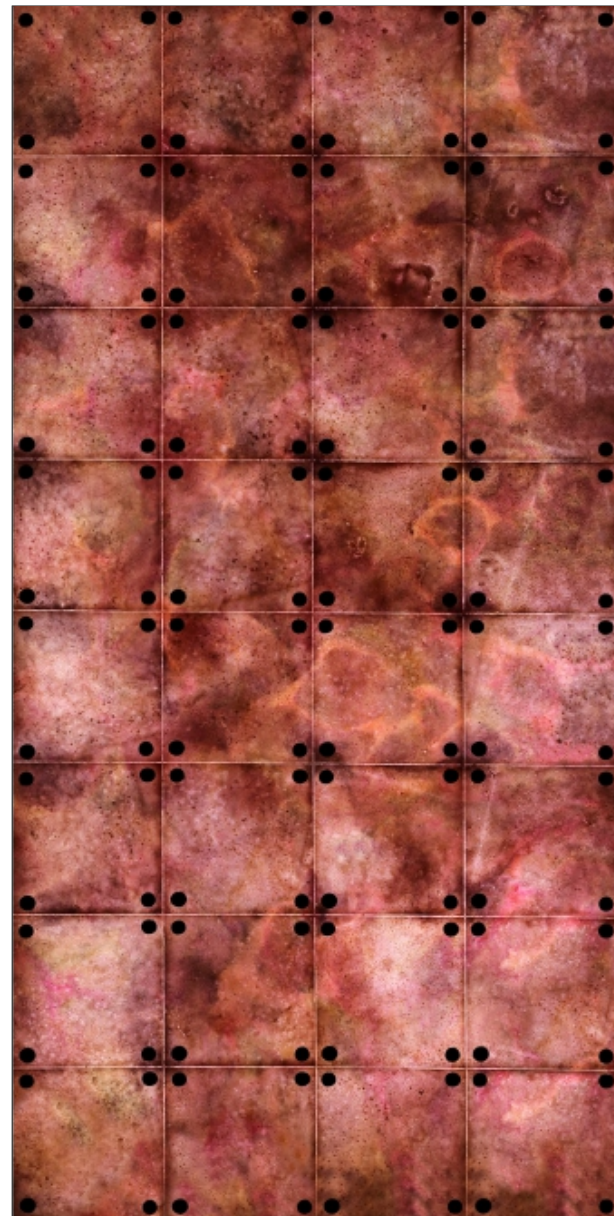
POOJA ROOM



Office Backdrop



Without Light



With Light

GS-102

Size:
4'x8' (1220mm x 2440mm)
(+/- 5mm)

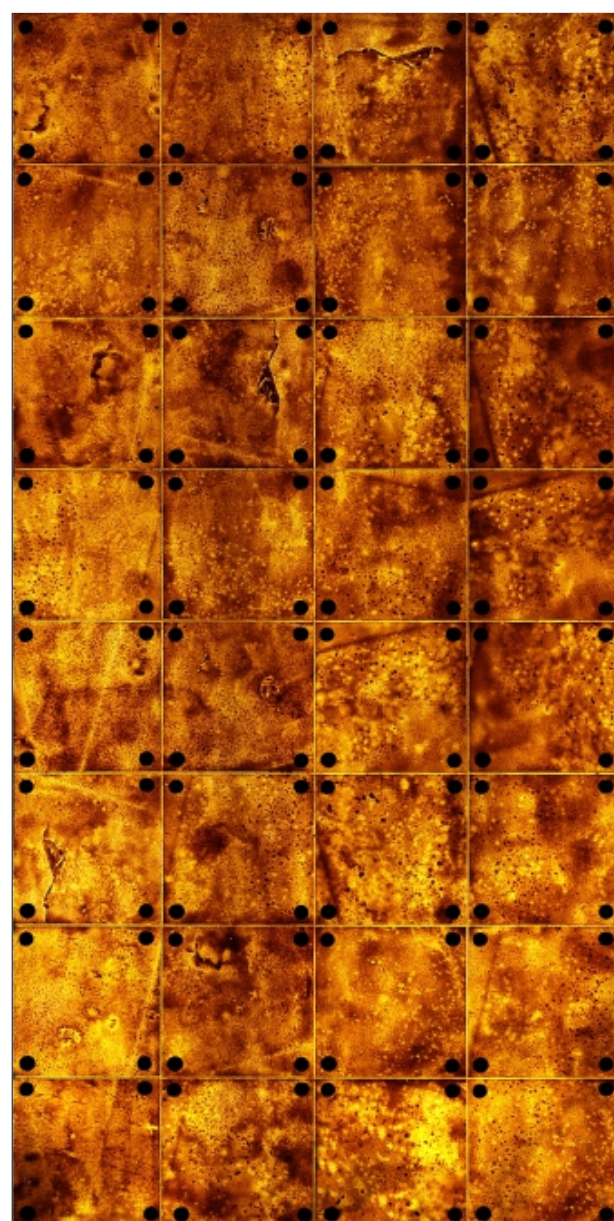
Thikness:
►4mm◄

- Natural Feel
- Granite Stone
- Matt Finish
- Rustic Surface

Bedroom



Without Light



With Light

GS-103

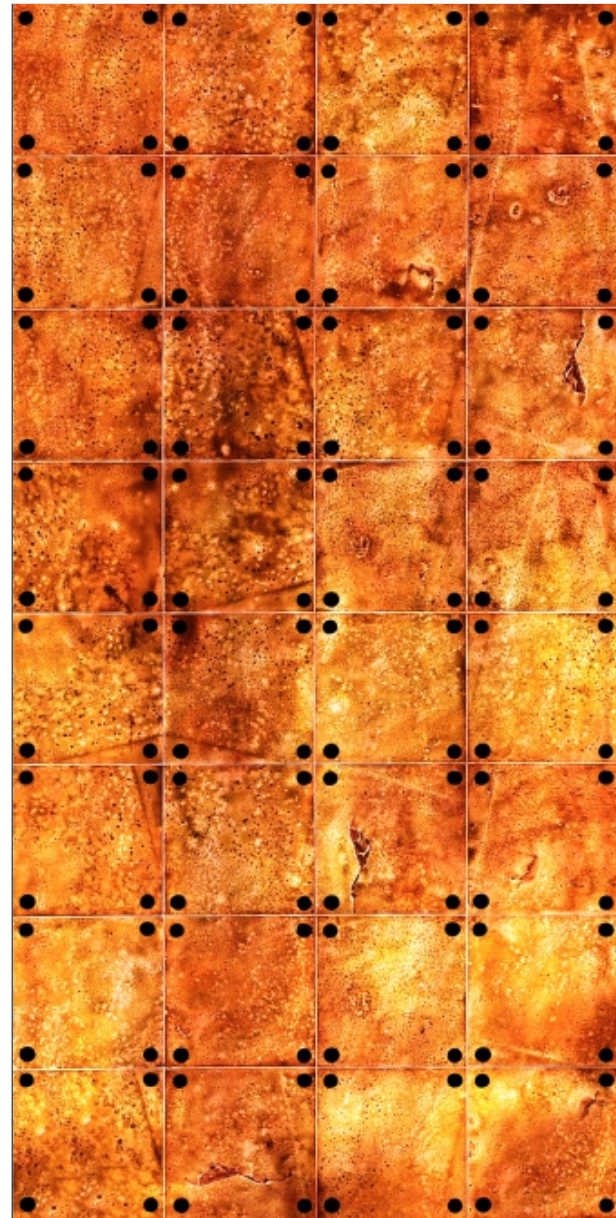
Size:
4'x8' (1220mm x 2440mm)
(+/- 5mm)

Thikness:
►4mm◄

- Natural Feel
- Granite Stone
- Matt Finish
- Rustic Surface



Without Light



With Light

GS-104

Size:
4'x8' (1220mm x 2440mm)
(+/- 5mm)

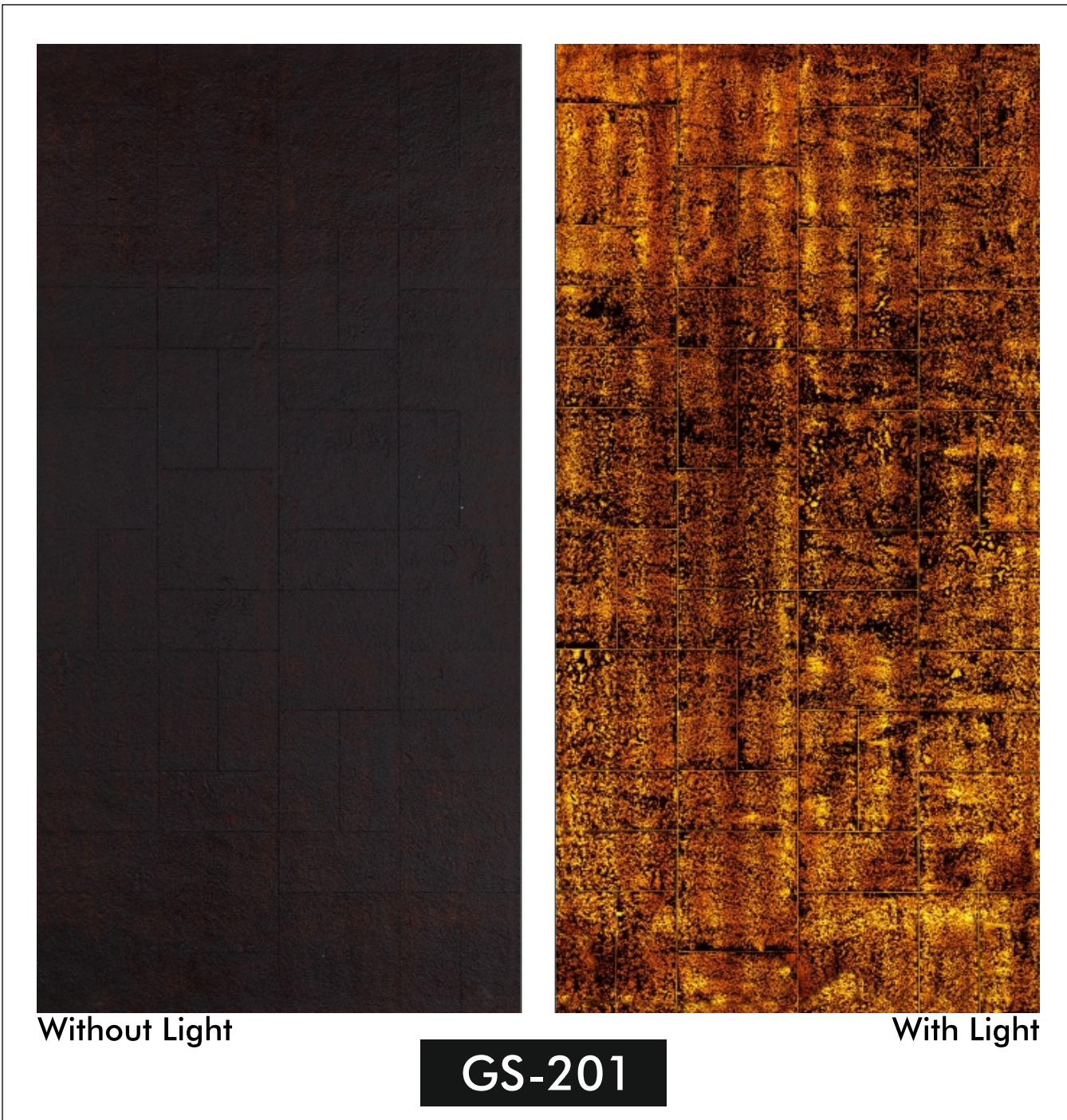
Thikness:
►4mm◄

- Natural Feel
- Granite Stone
- Matt Finish
- Rustic Surface



Staircase Wall



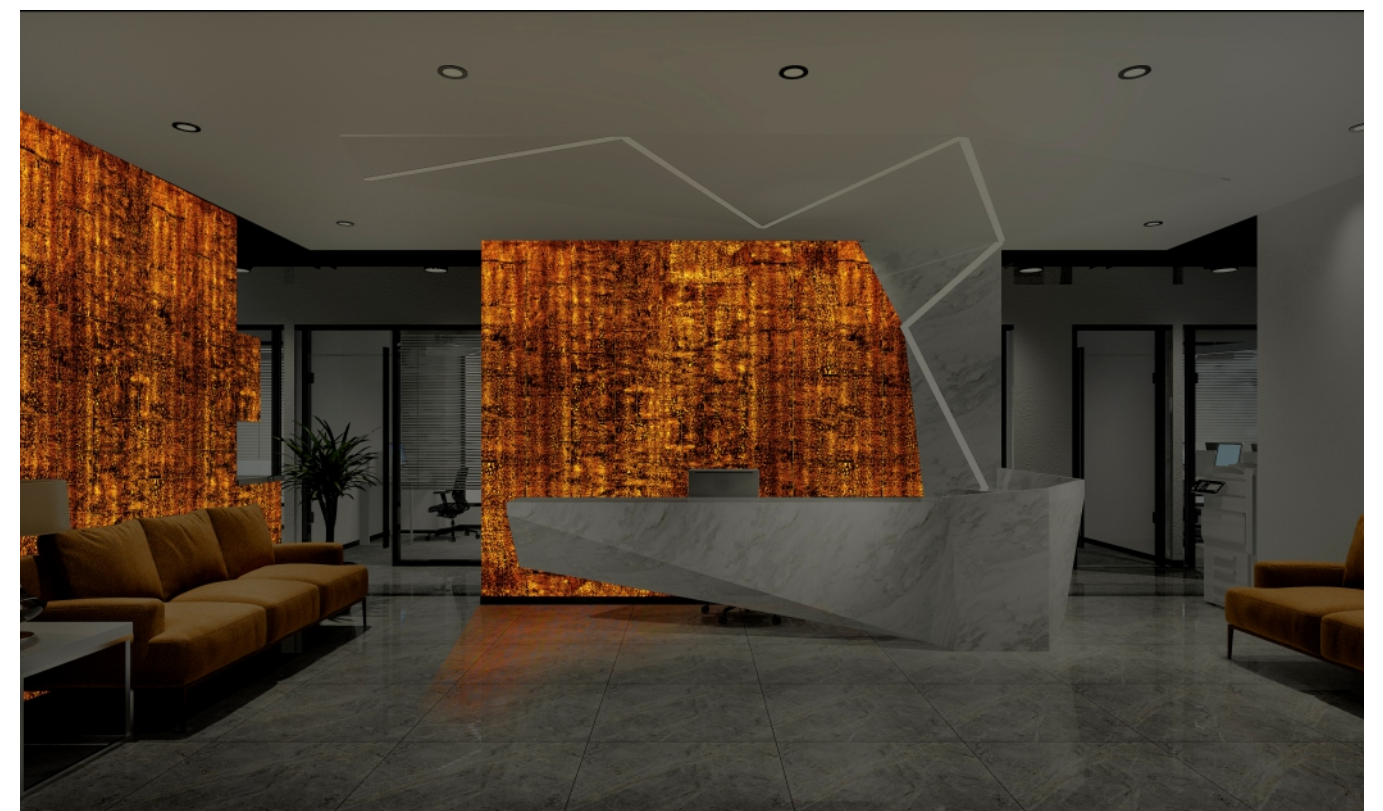


Size:
4'x8' (1220mm x 2440mm)
(+/- 5mm)

Thikness:
►4mm◄

- Natural Feel
- Granite Stone
- Matt Finish
- Rustic Surface

Resort







Without Light



With Light

GS-202

Size:
4'x8' (1220mm x 2440mm)
(+/- 5mm)

Thikness:
►4mm◄

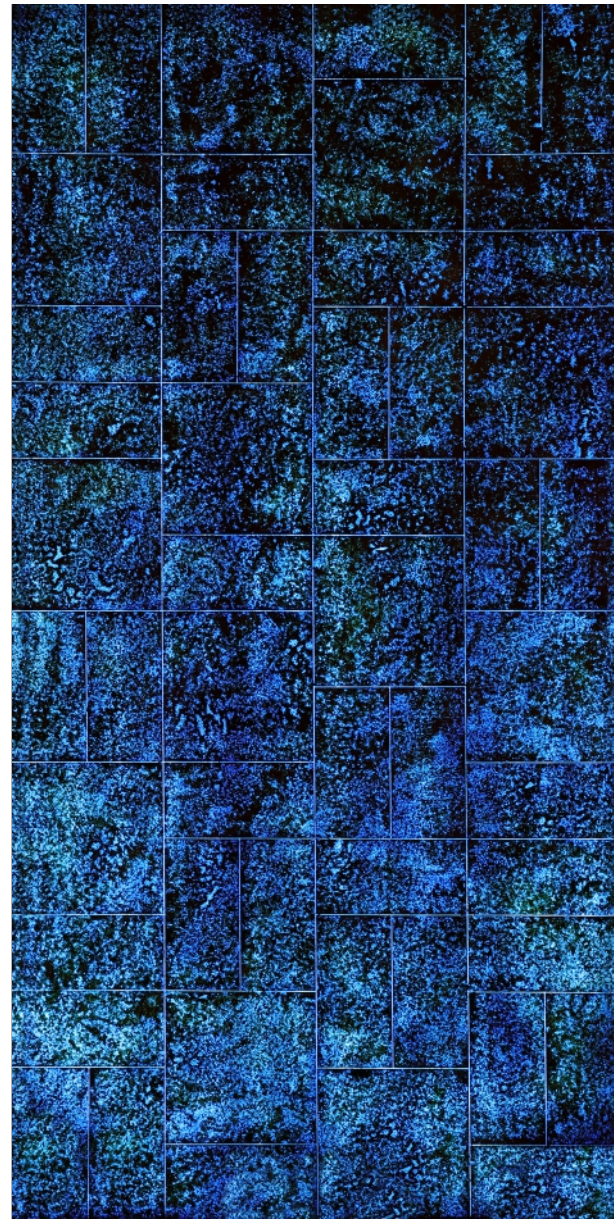
- Natural Feel
- Granite Stone
- Matt Finish
- Rustic Surface



Main Door



Without Light



With Light

GS-203

Size:
4'x8' (1220mm x 2440mm)
(+/- 5mm)

Thikness:
►4mm◄

- Natural Feel
- Granite Stone
- Matt Finish
- Rustic Surface

MARBLE SERIES



Without Light



With Light

MS-101

Size:
4'x8' (1180mm x 2400mm)
(+/- 5mm)

Thikness:
►4mm◄

- Natural Look
- Marble Stone
- Matt Finish





Without Light



With Light

MS-102

Size:
4'x8' (1180mm x 2400mm)
(+/- 5mm)

Thikness:
►4mm◄

- Natural Look
- Marble Stone
- Matt Finish



Reception Counter
Backdrop Area





Without Light



With Light

MS-103

Size:
4'x8' (1180mm x 2400mm)
(+/- 5mm)

Thikness:
►4mm◄

- Natural Look
- Marble Stone
- Matt Finish

Swimming Pool Area





Without Light



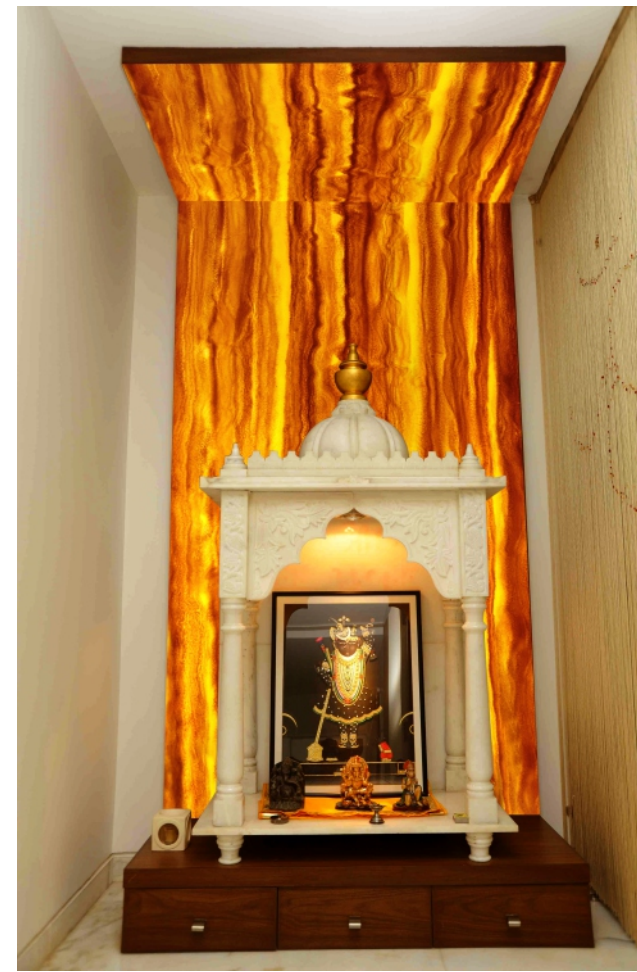
With Light

MS-104

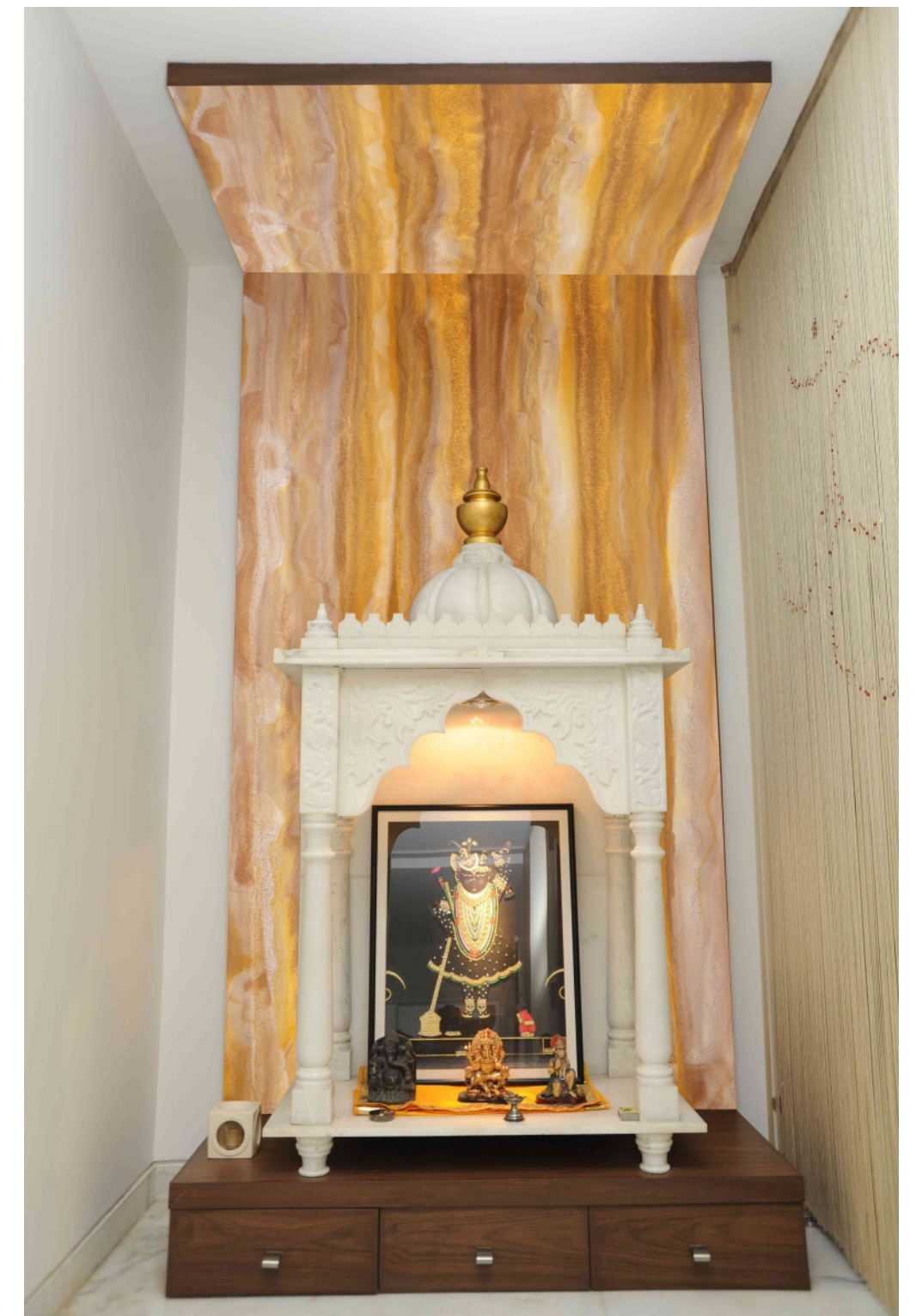
Size:
4'x8' (1180mm x 2400mm)
(+/- 5mm)

Thikness:
►4mm◄

- Natural Look
- Marble Stone
- Matt Finish



POOJA ROOM



Exterior Cladding



Without Light



With Light

MS-105

Size:
4'x8' (1180mm x 2400mm)
(+/- 5mm)

Thikness:
►4mm◄

- Natural Look
- Marble Stone
- Matt Finish



Reception



Without Light



With Light

MS-201

Size:
4'x8' (1180mm x 2400mm)
(+/- 5mm)

Thikness:
►4mm◄

- Natural Look
- Marble Stone
- Matt Finish



Without Light



With Light

MS-202

Size:
4'x8' (1180mm x 2400mm)
(+/- 5mm)

Thickness:
►4mm◄

- Natural Look
- Marble Stone
- Matt Finish



Swimming Pool



Restaurant



Without Light



With Light

MS-203

Size:
4'x8' (1180mm x 2400mm)
(+/- 5mm)

Thikness:
►4mm◄

- Natural Look
- Marble Stone
- Matt Finish





Without Light



With Light

MS-204

Size:
4'x8' (1180mm x 2400mm)
(+/- 5mm)

Thikness:
►4mm◄

- Natural Look
- Marble Stone
- Matt Finish



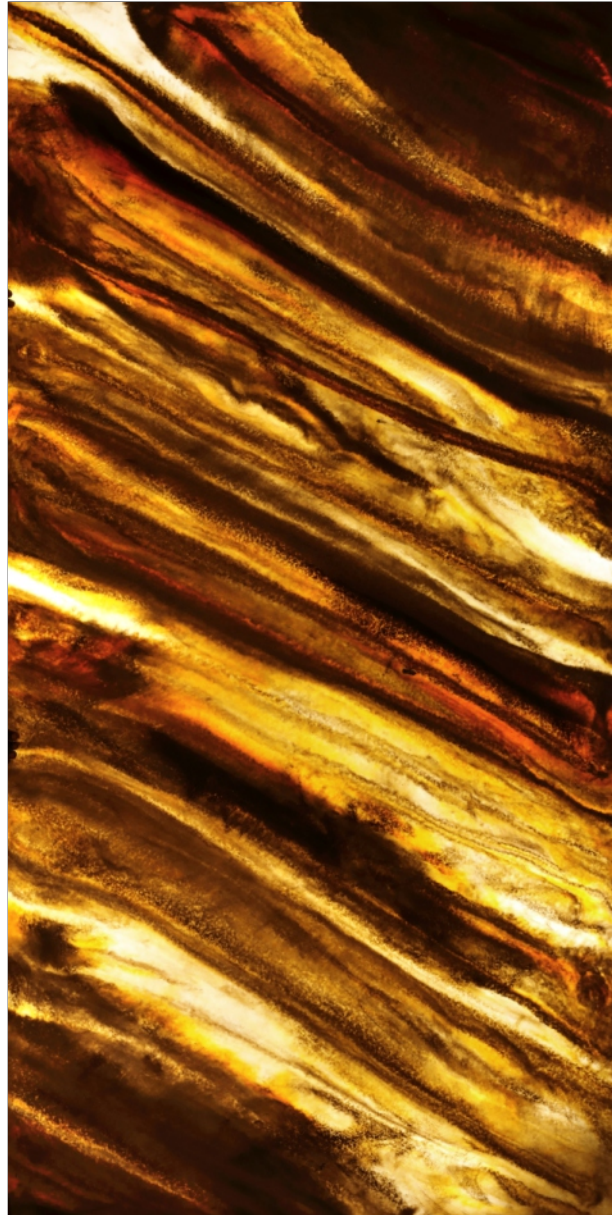
Hotel Reception



Living room



Without Light



With Light

MS-301

Size:
4'x8' (1180mm x 2400mm)
(+/- 5mm)

Thikness:
►4mm◄

- Natural Look
- Marble Stone
- Matt Finish





Without Light



With Light

MS-302

Size:
4'x8' (1180mm x 2400mm)
(+/- 5mm)

Thikness:
►4mm◄

- Natural Look
- Marble Stone
- Matt Finish

Bedroom





Without Light



With Light

MS-303

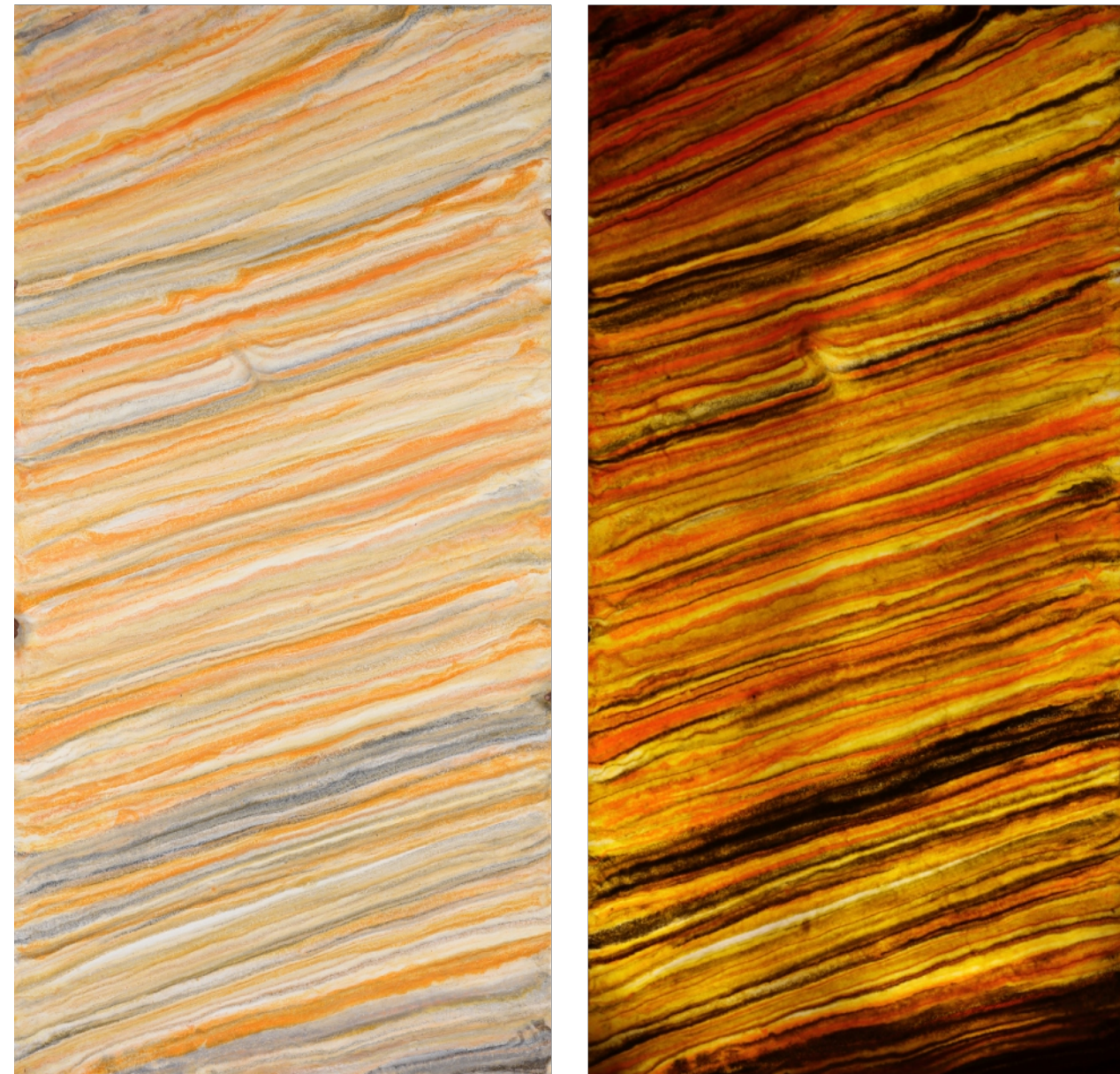
Size:
4'x8' (1180mm x 2400mm)
(+/- 5mm)

Thikness:
►4mm◄

- Natural Look
- Marble Stone
- Matt Finish



Waiting Lounge



Without Light

With Light

MS-304

Size:
4'x8' (1180mm x 2400mm)
(+/- 5mm)

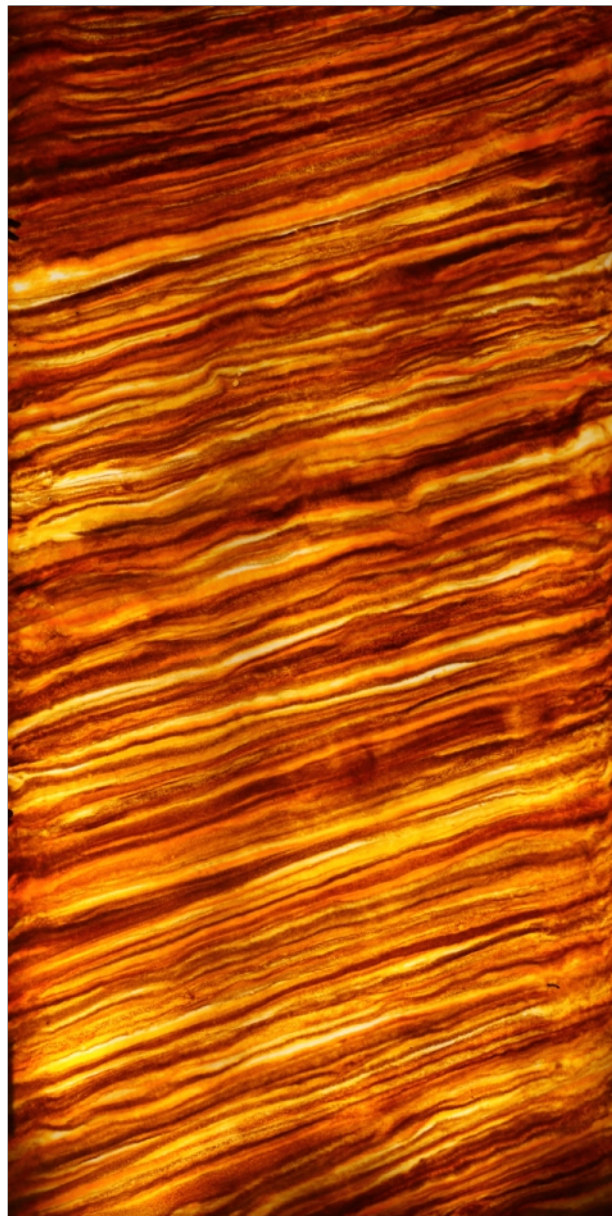
Thikness:
►4mm◄

- Natural Look
- Marble Stone
- Matt Finish

Bathroom



Without Light



With Light

MS-305

Size:
4'x8' (1180mm x 2400mm)
(+/- 5mm)

Thikness:
►4mm◄

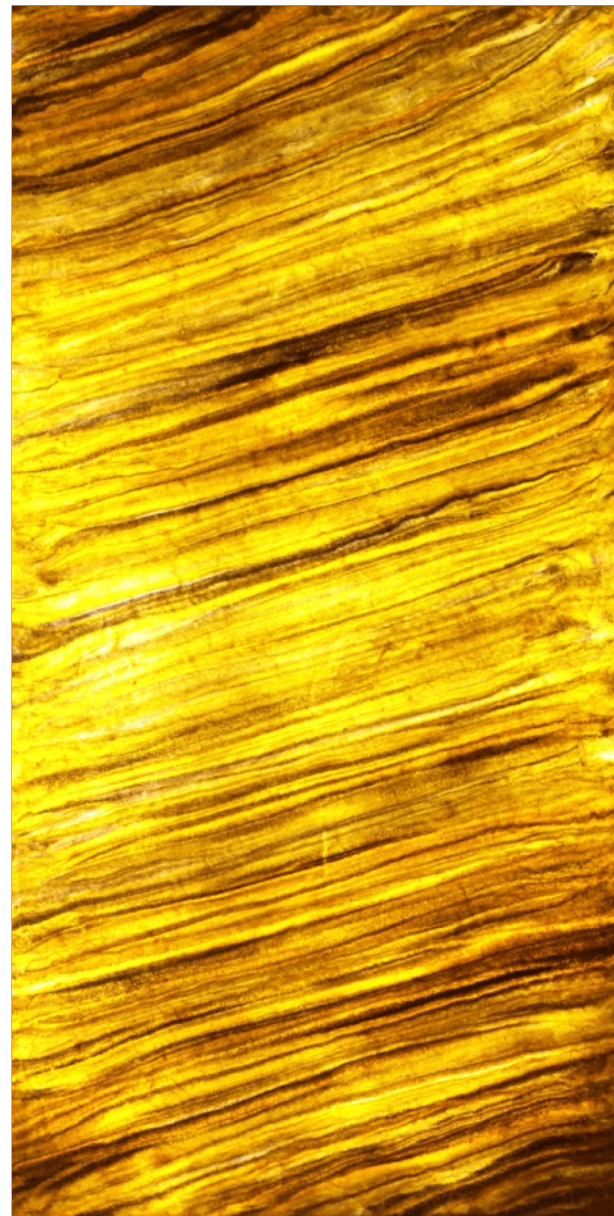
- Natural Look
- Marble Stone
- Matt Finish



Reception



Without Light



With Light

MS-306

Size:
4'x8' (1180mm x 2400mm)
(+/- 5mm)

Thikness:
►4mm◄

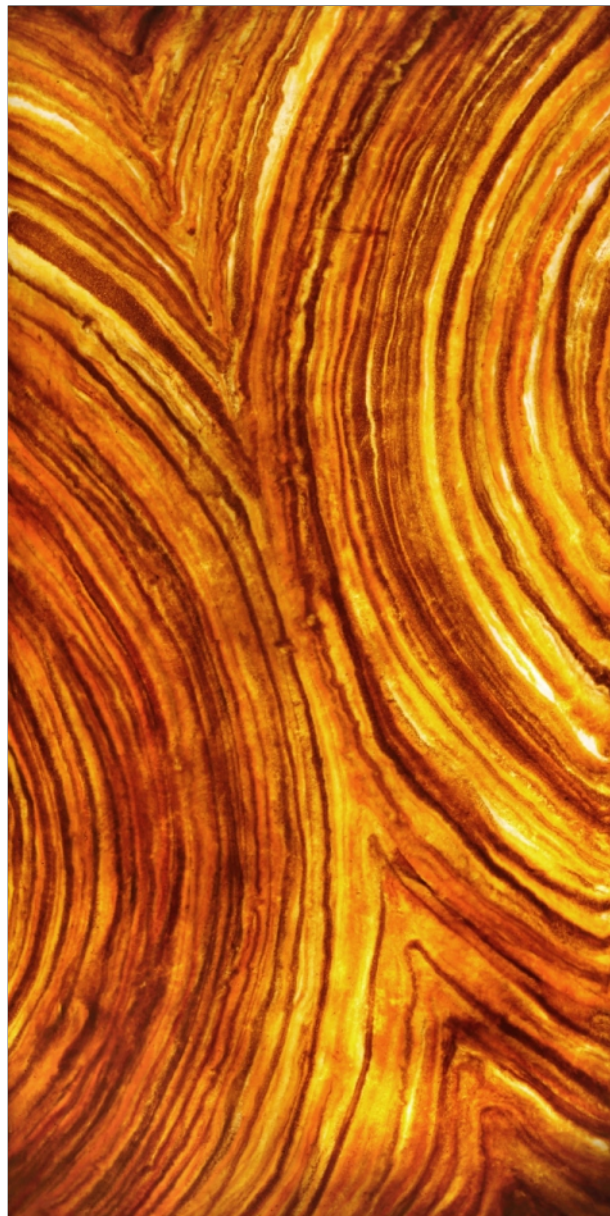
- Natural Look
- Marble Stone
- Matt Finish



Bar Counter



Without Light



With Light

MS-401

Size:
4'x8' (1180mm x 2400mm)
(+/- 5mm)

Thikness:
►4mm◄

- Natural Look
- Marble Stone
- Matt Finish

DECONYX is made by high molecular polyester resin. It looks like a natural stone and is not as expensive as them. It is easy to operate which makes it extremely popular worldwide. The best characteristics of **DECONYX** is that it can transmit light and has various styles and design to choose from. It has the advantages of being bent and seamless joint process.

Specifications of DECONYX
Standard size: 4' x 8' (Approx) Thickness: 4mm

Range of application:
Decorative wall panel, bar top, table top, light-through structure, translucent walls, ceilings, bar tables, lamps, columns of commercial buildings and household decoration purpose.

Performance of Landscape stone products:
Possessing the natural texture of marbles, smoothness of ceramics and the elasticity of lumber, **Deconyx** Series could be processed without joints. Besides, they offer many designs to choose and are easy to clean and convenient to fix. Scientific tests verify that **Deconyx** series have neither radioactive pollution nor toxic side effects. So far, these environmental friendly stones have been widely applied into various kinds of decoration projects.

Process and installation of Landscape stone products:
Easy to fabricate & install. Can fabricate on the spot. Wood-cutting saw or marble-cutting saw for cutting, hand drill machine for hole-drilling, router machine for edge chamfering & bending by heat.

The Photographs just show the partial effect. Its colour, effect and veins are not absolutely the same. Please see the samples for original colour & effect to avoid confusions. All designs are random.

No.	Inspected areas	Unit	Standard	Result	Conclusion
1	Density	g/cm	≥ 1.2	1.4	Qualified
2	Hygroscopic Capacity	%	≥ 0.4	0.05	Qualified
3	Stretching Strength	Mpa	≥ 15	38	Qualified
4	Compressed Pressure	Mpa	≥ 20	100 MPa Unbroken	Qualified
5	Flexural Ability	Mpa	≥ 10.0	68.2	Qualified
6	Hardness	Degree	≥ 80	88	Qualified
7	Heat Resistance	-----	Put it into 100°C boiling water for 1Hr no bubbles appears	Pass	Qualified
8		-----	No obvious change in color	Pass	Qualified
9	Cigarette Burn Resistance	-----	No marks left behind but colors slightly turn in yellow (put the burning cigarette on the surface 60 sec)	Pass	Qualified
10	Acidity Resistance	-----	(Permeated in 30% hydrochloric acid for 24 hrs) no obvious change for appearance	Pass	Qualified
11	Alkalinity Resistance	-----	N(Permeated in 10% alkali for 24 hrs) no obvious change for appearance	Pass	Qualified
12	Stain Resistance	-----	Tea stains, coffee stains and ink can be cleaned easily by normal cleaning detergent (maintain the stings on product surface 24 hrs)	Pass	Qualified
13	Radioactivity	1ra	Out 1. Building Material	0.99	Pass
14	Radioactivity	lr	1. Out1. Building Material ≤ 1.0 2. Decoration Material ≤ 1.3	0.77	Pass



Thickness : 4mm

Recommended Glue for Joints: Resibond Clear
Araldite Clear
Silicone Clear

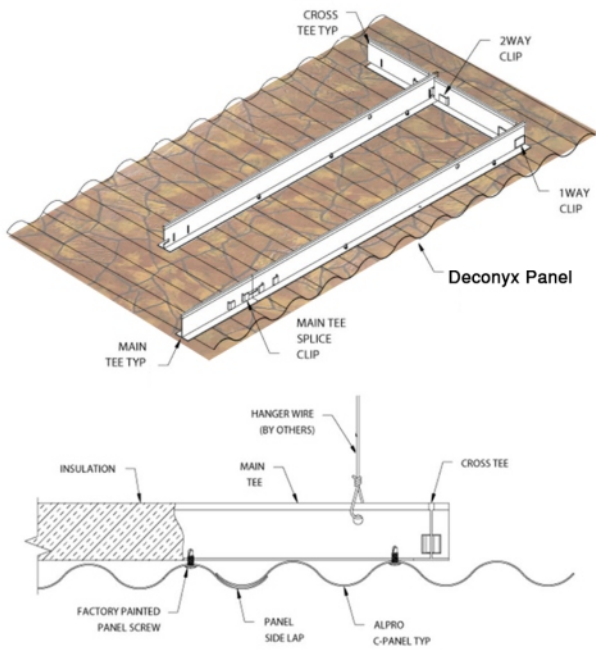
Recommended Glue for pasting: Resibond
Araldite
Bondtite

Recommended Cutter Blade



DECONYX INSTALLATION GUIDE

CEILINGS

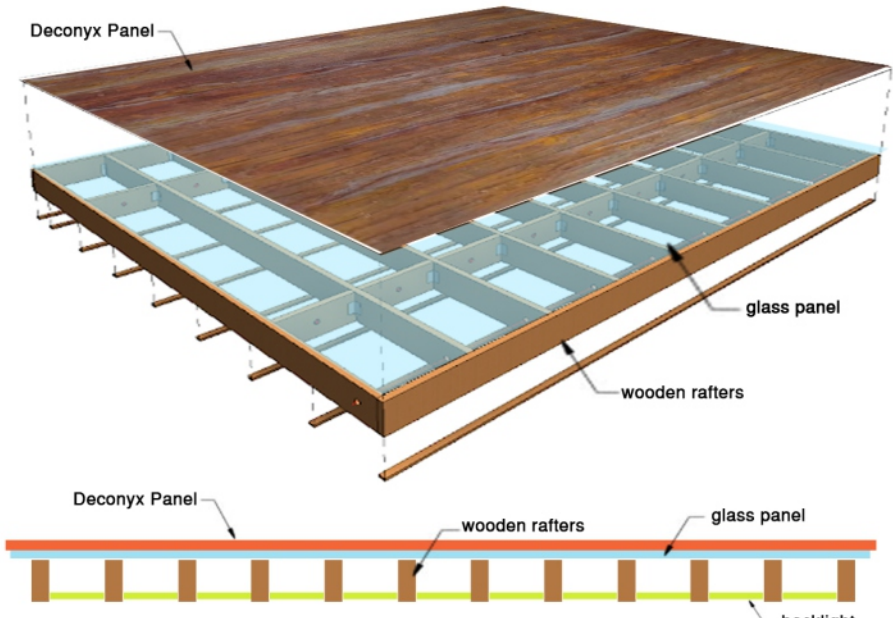


Deconyx Panels supported with wooden frame structure

FLOORING

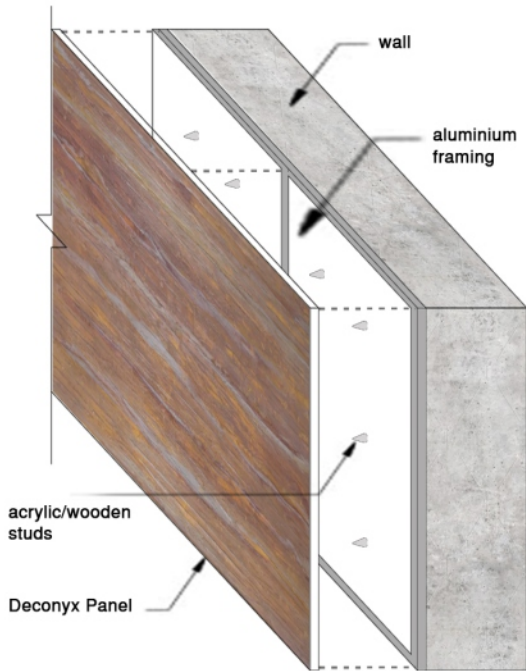


Deconyx Panels installation with silicon binding



Deconyx Panels installation with wooden rafters and glass panel

WALL CLADDING/ COLUMN/ BEAM



DECONYX INSTALLATION GUIDE

FURNITURE

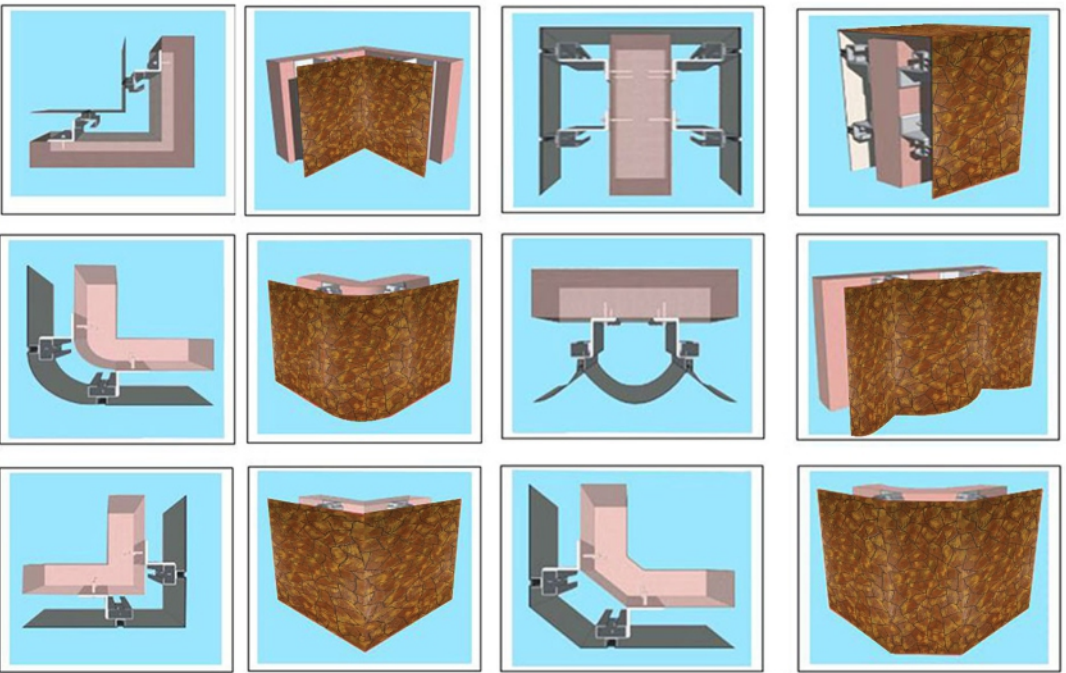


Deconyx panels can be used for direct furniture installation using using silicon binder with backlit applications.

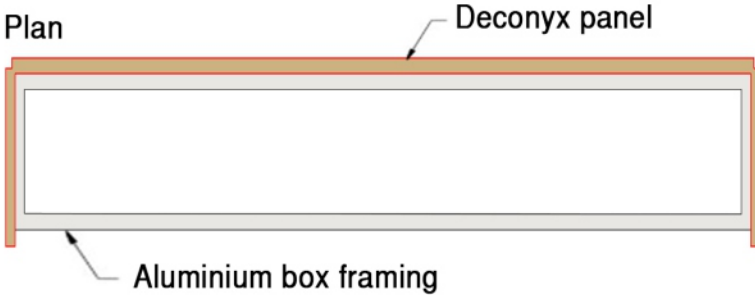
EXTERIOR CLADDING



Exterior wall panels cladding with aluminium framing and backlit installation.



SIGNAGE BOARD



- CNC engraved deconyx panel with aluminum framing
- Backlit installation
- Installation similar to ACP panels
- Halfcut groove can be used to fold the panel with heating process

DECONYX INSTALLATION GUIDE

SHEET BENDING PROCESS



Depth of the groove should be between 2 to 2.5mm which will lead to the 1 to 1.5mm thick sheet left which should be appropriate for bending or else it will crack

On the 4mm Deconyx sheet first step to bend the sheet is to make a 6mm thick groove over the bending edge.

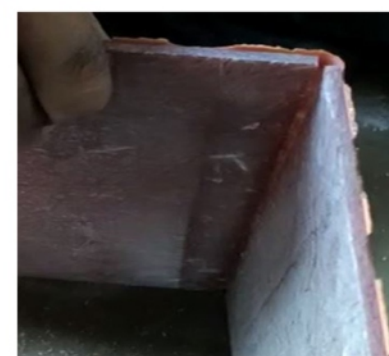
BACK LIGHT PANELS



Back light application : Allow backspace of 1.5 to 2 inch behind the Deconyx sheet to avoid light reflection. Amount of space behind the sheet may vary with different types of light and its application



Using heat thrower slowly heat both the side of the sheet over the bending edge. Make sure to not over heat the sheet. Don't bend the sheet directly after heating or else it may cause crack let it cool for few second and when its still warm carry on bend this will lead to proper bending of the sheet. Also you can pour silicon between the groove for more stability and strength.



NOTE : BEFORE IMPLYING ANY METHOD OVER SHEET MAKE SURE TO TRY IT OVER A PIECE OF THE SHEET



DECONYXTM

TRANSLUCENT SHINE PANELS

Office:

F-3A, Sapath-IV,
Opp. Karnavati Club,
S.G. Highway, Ahmedabad-380015.

Cell: +91 76210 00283

E-mail: a.deconyx@gmail.com

Godown:

A-11, Raheman Estate,
Nr. Sukh Sagar Restaurant,
Sarkhej-Sanand Chowkdi, Sarkhej,
Ahmedabad-382210.

Cell: +91 76210 00383

E-mail: a.deconyx@gmail.com



+91 76210 00383



officialdeconyx



deconyx



deconyx



Be Indian
Buy Indian

